

Draft Land Use Plan

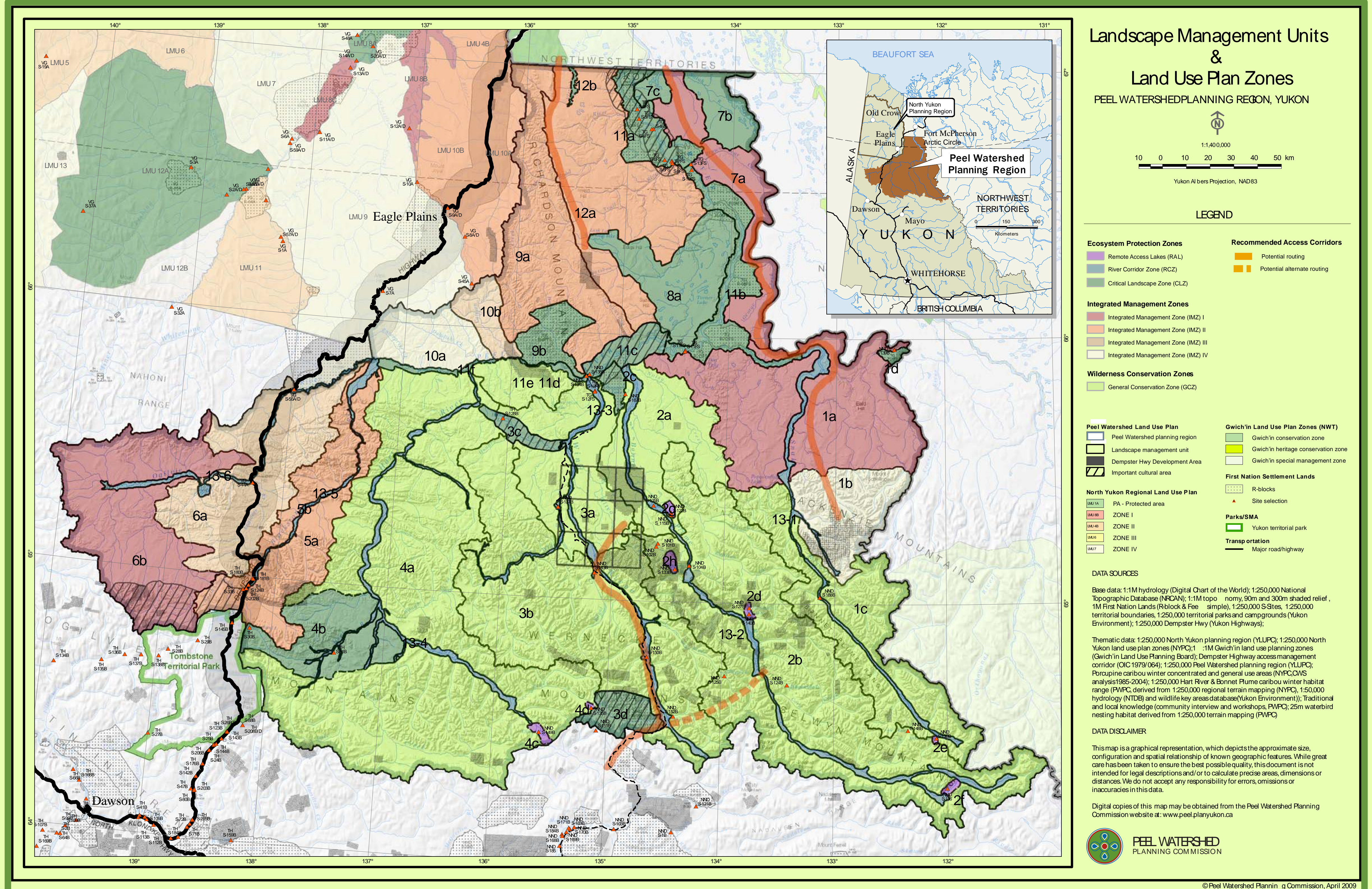
Peel Watershed Planning Region

This plan will help ensure wilderness characteristics, wildlife and their habitats, cultural resources, and waters are maintained over time while managing resource use. Cumulative impacts monitoring, access routing, conservation and water management are major components.



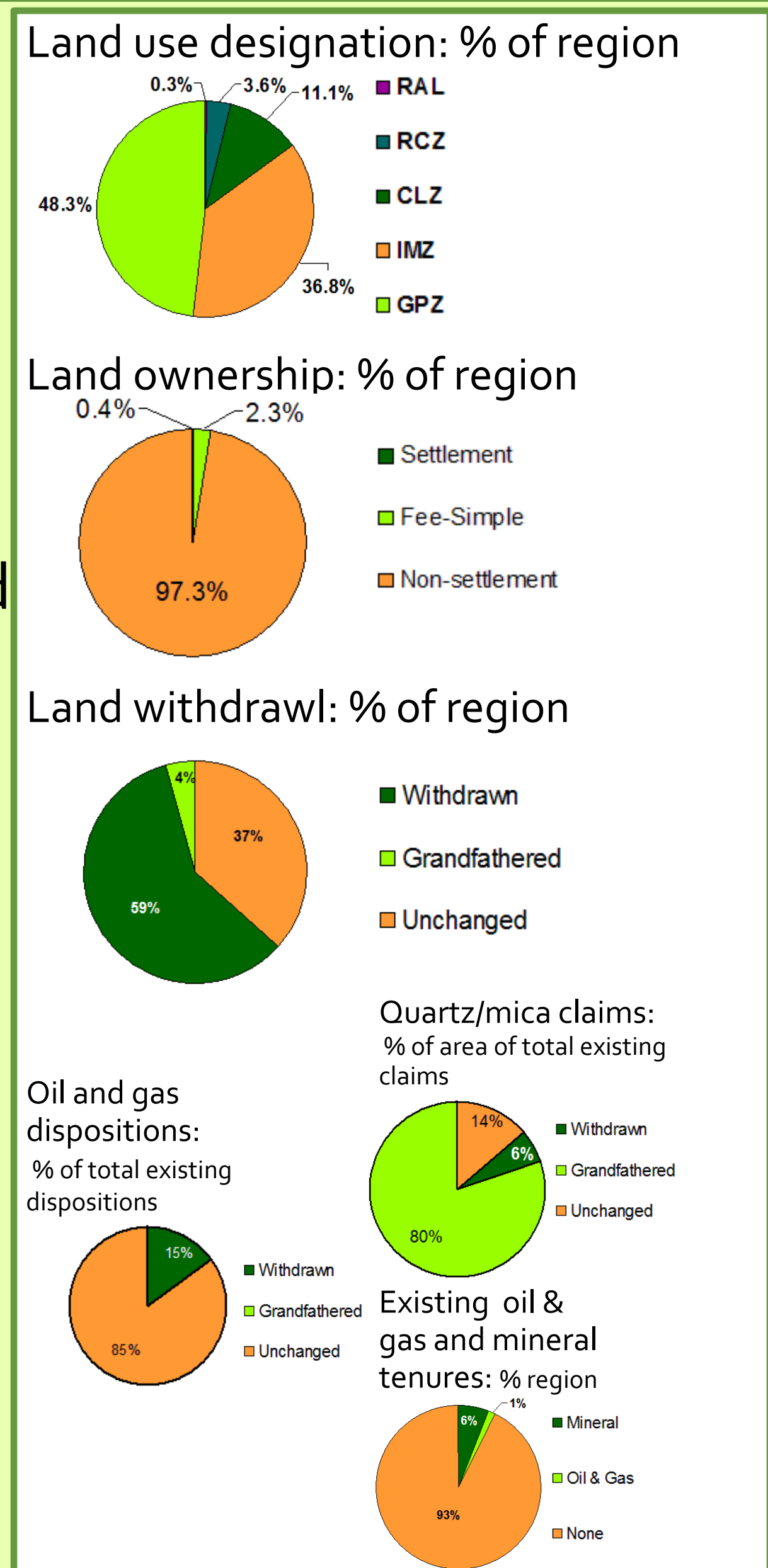
Plan Goals

- Manage land use in a coordinated way
- Protect and manage water and related ecosystems
- Protect and manage land and related ecosystems
- Protect and manage sensitive or important landforms and features
- Recognize, conserve and promote heritage and cultural values
- Manage and plan access to respect ecological, cultural and wilderness values
- Facilitate sustainable development opportunities and activities



Plan Highlights

- The Plan divides the region into 46 landscape management sub-units; each sub-unit is designated to a land use management zone
- Effects of multiple land use activities are tracked with terrestrial and aquatic disturbance indicators
- Almost half of the region is recommended to being withdrawn from staking; however existing claims and tenures will be respected
- Especially sensitive areas are recommended to being withdrawn from most development
- Much of the region will be considered a 'working landscape' where new tenures are allowed, and where some development may occur
- New access will be strictly controlled and restored when no longer used



Land Use Designation System

Land Use Category	Zone	Management Intent	All-season Access	Winter Access	Subsurface	Grandfathered Surface	Grandfathered Subsurface	Withdrawal	Surface Withdrawal
Recommended Conservation and Protected Zones									
Tier I – Ecosystem Protection	Legally designated land areas withdrawn from surface and subsurface rights. Oil and gas, mining and other industrial land uses are not permitted.								
	Critical Landscape Zones (CLZ's)	No Industrial Development				✓	✓	~2	
	River Corridor Zones (RCZ's)	Lowest Development	~1	~1		✓	✓	✓	
	Remote Access Lakes (RAL's)	No industrial development; regulation of access.					✓	✓	
Tier II – Wilderness Conservation	Large areas of mostly wilderness with some existing industrial tenures. Long-term management intent is to receive tier I ecosystem protection designation.								
	General Conservation Zones (GCZ's)	High Conservation	✓	✓	✓	✓	✓	✓	✓
Integrated Management Zone									
Integrated Management Zone	Sub-surface resource extraction while minimizing land use conflicts and maintaining long-term ecosystem function								
	Zone I	Lowest Development	✓	✓					
	Zone II	Low Development	✓	✓					
	Zone III	Moderate Development	✓	✓					
	Zone IV	Highest Development	✓	✓					

✓ Required or allowable action for land use designation
~1 Provisions for access in Wind River and Bonnet Plume RCZ (see Draft Plan and Land Use Designation Map)
~2 Provisions surface dispositions for camps, cabins or other related buildings in Hungry Lake and Nash Creek Landscape Management Units for traditional use purposes (see Draft Plan)



For further information please contact:
Peel Watershed Planning Commission
Suite 201-307 Jarvis Street
Whitehorse, YT Y1A 2H3
tel: (867) 667-2374
fax: (867) 667-4624
toll free: 1-866-353-2374
email: info@planyukon.ca
www.peel.planyukon.ca

